

EVALUATION

South Gloucestershire Strategic Swimming Group has been working on number of initiatives in order to raise standards of swimming by the end of Key Stage 2. It has introduced a range of new strategies in South Gloucestershire Pools (alongside the conventional swimming sessions), to support young people in their learning. National research suggests young people learn best when: group sizes are small, pupils swim on a frequent, regular basis (i.e. daily) and the quality of teaching is of the highest level. To respond to these factors the South Gloucestershire Strategic Swimming Group set about:

- Improving the quality of swimming teaching through fully funded courses and professional development opportunities.
- Offering intensive crash course provision (swimming every day for a week – block swimming) alongside the usual weekly sessions.
- Offering smaller group sizes.
- Offering intensive 1 week TOP UP Block targeted at those year 6 pupils still working towards the 25m target.
- Providing Swimming Guidance Packs for all Primary and Special schools

High Quality Teaching

The work of The Swimming Professional Development Group (an arm of the South Gloucestershire Strategic Swimming Group) has been instrumental in improving the confidence and skills of school staff who work on poolside. Local Authority guidance now states: the Introduction to Swimming course is an expected minimum qualification. This progresses to an ASA Module 1 National Curriculum qualification which at least 1 person per school should have successfully completed. Schools should also support any staff wishing to progress towards Module 2 National Curriculum swimming. These courses have been available to all schools to access. The School Sport programme allocated 1 day's Primary Link Teacher (PLT) funding to swimming professional development for schools to use as they see appropriate i.e. supply costs.

Intensive Daily Swimming

A Block Session is an intensive programme of swimming instruction (rather like a “crash course”), undertaken each day for one week. A number of block sessions were made available to schools this year in order to assess the increased effectiveness of such learning methods.

In order to support this initiative, an additional instructor (over and above the single instructor included in the session charge) was provided, through funding from the National Top-Up Scheme all free of charge to Schools. Feedback has shown this method of delivery was very effective in increasing progress and standards of swimming and thus will be repeated in the next academic year.

TOP UP Blocks

TOP UP Blocks provided an opportunity for targeted Year 6 pupils to receive additional swimming, in conjunction with the School's normal swimming provision. Schools identified pupils who had yet to achieve the requisite 25m standard during a previous period of instruction. The schools were then offered the opportunity to bring these pupils to daily swimming lessons for 1 week. Group sizes were kept low, with some groups as small as 1 instructor to 3 swimmers.

42.5% of all primary schools took part in the Top Up week.

Evaluation (pp 4-7) have shown this programme was highly effective in improving the standard of schools swimming:

Summary Results

86% of year 6 pupils achieved the 25m national curriculum target - this was 1% above our target. 456 pupils were identified as still to reach the target during their normal swimming lesson provision.

All 456 of these pupils were offered space on the Top Up Block week and 70% of these spaces were taken up by their schools. In the end, 264 turned up for lessons (after some cancellations for various reasons) and of those that attended 73% (193 pupils) achieved the 25m target.

The average improvement per pupil was 18.4m during the 5 lessons, with the average distance achieved of all taking part reaching just under 24m (33 pupils achieved 50m or more).

78% of pupils on Top Up Blocks within the Grange Partnership achieved the target.
65% of pupils on Top Up Blocks within the King Edmunds Partnership achieved the target.

Detailed target measures and results are shown overleaf.

Monitoring & Review Criteria

We aim to measure and monitor the outcomes of the swimming developments that are put in place as a result of this guidance and the wider swimming programme.

Measure 1

Percentage and number of Year 6 pupils able to swim 25m to KS2 target.

Measure 2

Percentage and number of pupils eligible for Top Ups (<25m).

Measure 3

Percentage and number of pupils eligible for Top Up provision who were offered places.

Measure 4

Percentage and number of pupils offered Top Up provision who were booked onto places by schools (uptake by schools).

Measure 5

Percentage and number of pupils offered Top Up provision who actually attended sessions.

Measure 6

Percentage and number of Top Up attendees who achieve 25m KS2 target.

Based on data collected between 2005-7 the target for measure 1. is more than 85%.

The base line data collected in 2008 will be used to set future targets for all measures.

These results will be publicly available on: www.sgleisure.org/swimming/schools

Top Level Results 2008 / 09

Measure 1 **2,798 Pupils** **86%** *(above target by 1%)*

Percentage and number of Year 6 pupils able to swim 25m to KS2 target.

Measure 2 **456 Pupils** **14%**

Percentage and number of pupils eligible for Top Ups (<25m).

Measure 3 **456 Pupils** **100%**

Percentage and number of pupils eligible for Top Up provision who were offered places.

Measure 4 **319 Pupils** **70%**

Percentage and number of pupils offered Top Up provision who were booked onto places by schools (uptake by schools).

Measure 5 **264 Pupils** **83%**

Percentage and number of pupils offered Top Up provision who actually attended sessions.

Measure 6 **193 Pupils** **73%**

Percentage and number of Top Up attendees who achieve 25m KS2 target.

**KEY
POINTS:**

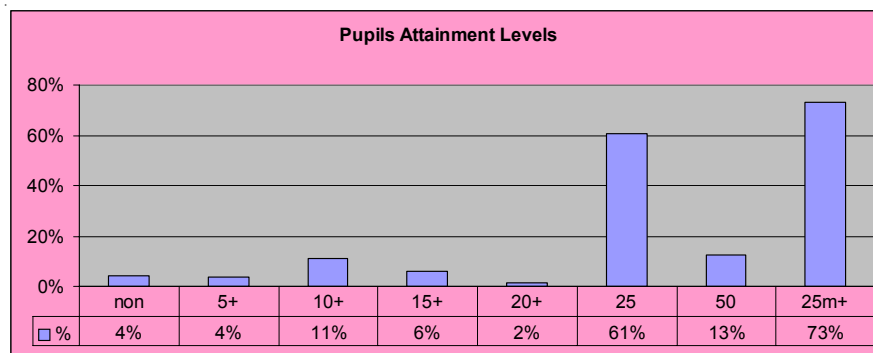
**193 MORE PUPILS CAN NOW SWIM
AT LEAST 25M AS A RESULT OF TOP UPS**

**PAGE
4**

Detailed Results 2008 / 09

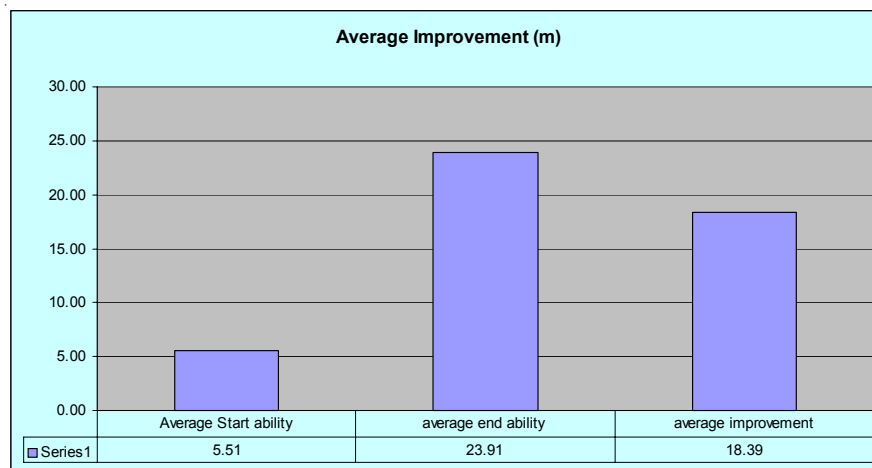
Average Final Pupil Attainment

This shows the number of people who achieved each distance, and shows how many achieved at least 25m



Average Pupil Improvement

This demonstrates the average improvement (in metres) by pupils.



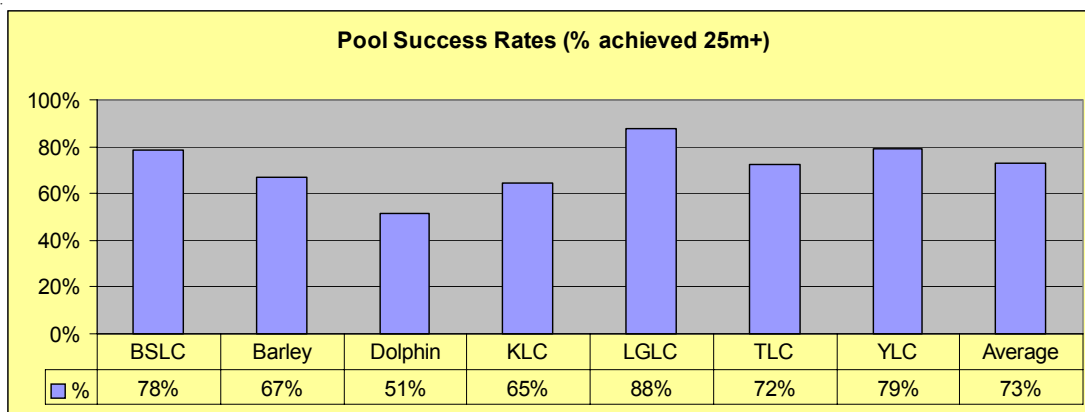
**KEY
POINTS:**

**PUPILS IMPROVED BY AN AVERAGE OF
18.4 METRES**

Detailed Results 2008 / 09

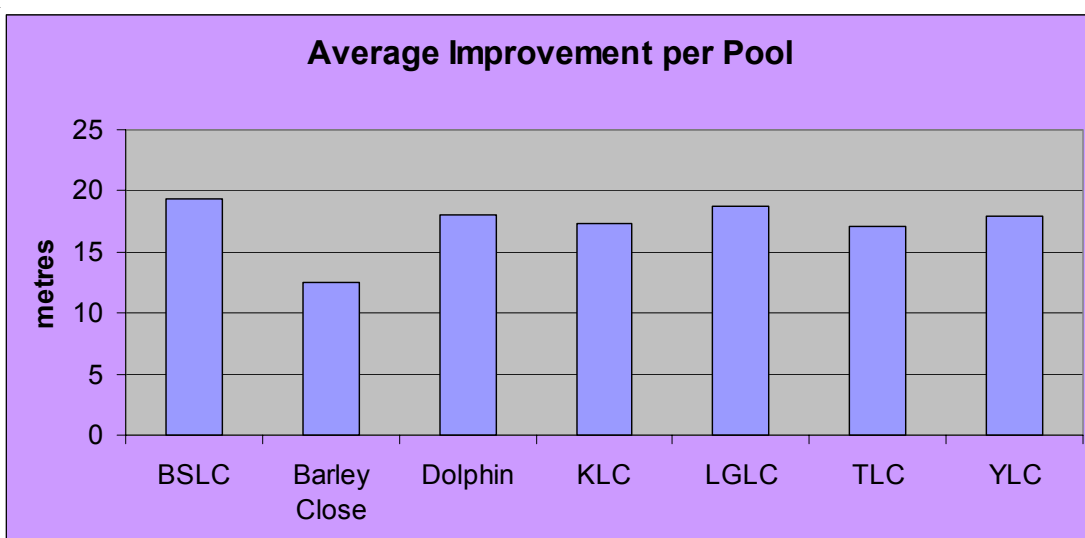
Pool Success Rates

This chart demonstrates the percentage of children who achieved the target of 25 metres at each pool.



Average Improvement per Pool

This chart looks at the average improvement (in metres) made by pupils attending each pool. It shows the 'value-added' by each pool.



KEY POINTS:

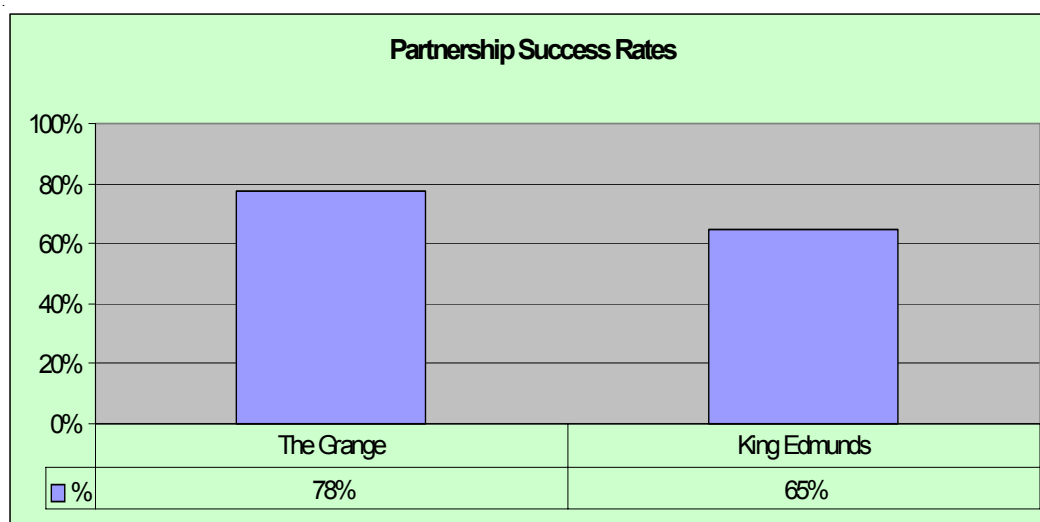
TOP UPS FOCUS ON GETTING AS MANY PUPILS TO 25 METRES AS POSSIBLE, BUT EVERYONE BENEFITS

PAGE 6

Detailed Results 2008 / 09

Partnership Results

Demonstrates percentage of pupils who achieved the 25m target through Top Ups for each of the two school partnerships.



Key to charts

BSLC	Bradley Stoke Leisure Centre
Barley Close	Barley Close School Pool
Dolphin	Filton Town Council Pool
KLC	Kingswood Leisure Centre
LGLC	Longwell Green Leisure Centre
TLC	Thornbury Leisure Centre
YLC	Yate Leisure Centre

**KEY
POINTS:**

**TOP UPS RAN ACROSS THE WHOLE OF
SOUTH GLOUCESTERSHIRE**

**PAGE
7**